

## Resistive Linear Position Transducer



- Measuring range 10mm – 100mm
- Long mechanical life 100.000.000 cycles
- Excellent repeatability
- Very low temperature drift
- Infinite resolution

### Main Applications

Metal Forming Machines, Textile Machines, Packing Machines, Printing Machines, Marble/ Stone Machines and General Automation Applications

### Specifications

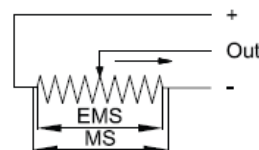
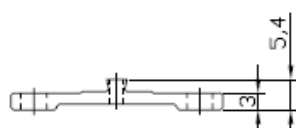
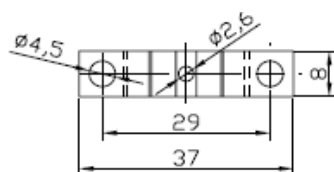
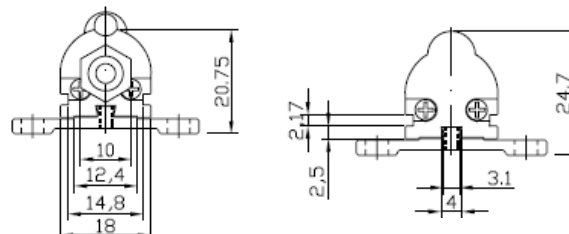
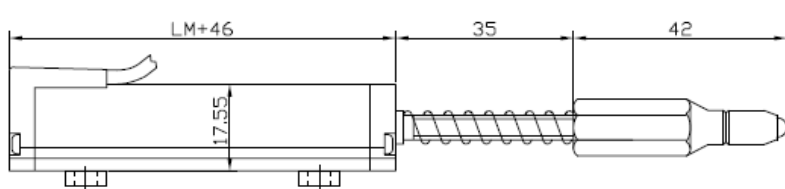
Mechanical stroke	10mm to 100mm
Linearity	± %0,05
Resolution	Infinite
Resistance output	5 Kohm or 10 Kohm
Resistance tolerance	± %20
Load resistance	Min. 100 Kohm
Repeatability	≤ %0.01
Mechanical life	100 * 10 <sup>6</sup> Cycles
Displacement speed	≤ 5 m/s
Permissible applied voltage	28 VDC max
Recommended cursor current	< 1 µA
Electrical connections	cable (30cm)
Case dimensions	Ø 18mm
Case material	Anodized aluminium
Rod diameter	4mm
Rod material	Stainless steel
IP Degree	IP 65
Working temperature	- 20 / + 80 °C
Mechanical fixing	Variable brackets

### Dimensions

Model	LM	Mechanical stroke (MS)	Electrical measuring stroke (EMS)	Total lengt (L)
SLPS	10	12mm	10mm	133mm
SLPS	25	27mm	25mm	148mm
SLPS	50	52mm	50mm	173mm
SLPS	75	77mm	75mm	198mm
SLPS	100	102mm	100mm	223mm

### Ordering Procedure

SLPS <i>Model</i>	50 <i>Measurement Stroke</i>	D <i>Linearity Class</i> D: 0,05 %	5K <i>Kohm Value</i> 5K: 5 KΩ
----------------------	---------------------------------	--	-------------------------------------



EMS= Electrical Measuring Stroke  
MS = Mechanical Stroke