

## Resistive Linear Position Transducer



- Measuring range 30 mm – 800 mm
- Long mechanical life 100.000.000 cycles
- Excellent repeatability
- Very low temperature drift
- Infinite resolution

### Main Applications

Plastic / Metal Injection Moulding Machineries, Textile Machineries, Transfer / Hydraulic Machineries, Marble / Stone Machineries and General Automation Applications

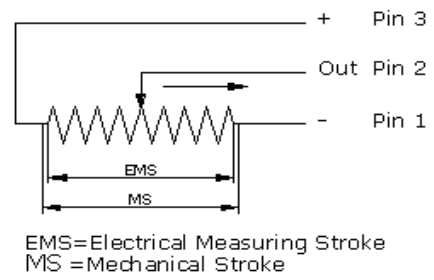
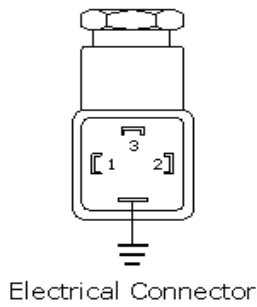
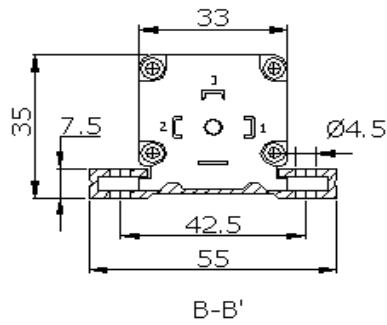
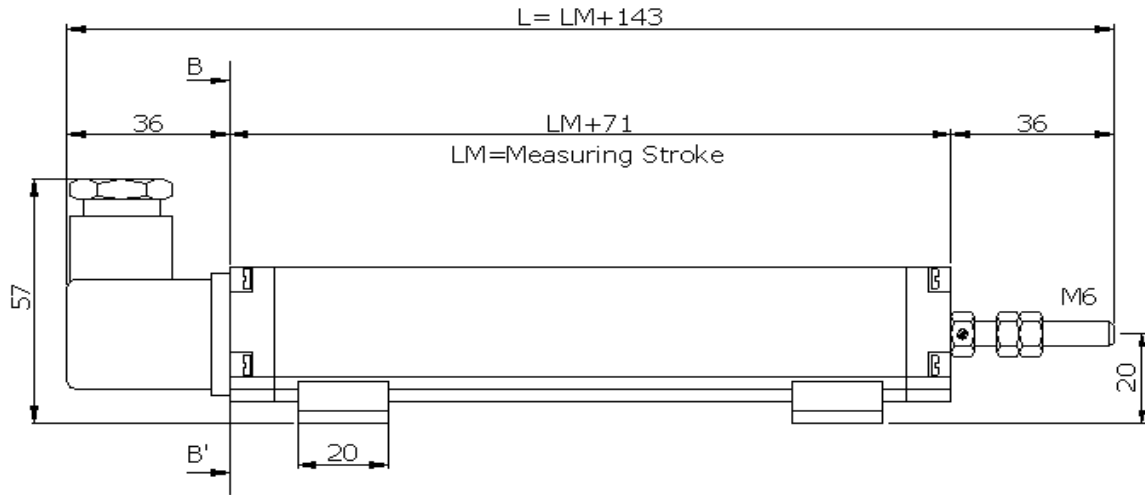
### Specifications

Resistance	5 Kohm or 10 Kohm
Resistance tolerance	± %20
Linearity	± %0,5 ; ± %0,1 ; ± %0,05
Repeatability	≤ %0.01
Load resistance	Min. 100 Kohm
Recommended cursor current	< 1 µA
Permissible applied voltage	28 VDC
Electrical connections	4 Pole, Hydraulic type
Mechanical stroke	30 to 800 mm
Mechanical life	100 * 10 <sup>6</sup> Cycles
Displacement speed	≤ 5 m/s
Rod diameter	6 mm
Rod material	Stainless steel
Case material	Anodized aluminium
Mechanical fixing	Variable brackets
IP Degree	IP 54
Working temperature	- 20 / + 80 °C

### Dimensions

Model	LM	Mechanical Stroke (MS)	Electrical Measuring Stroke (EMS)	Total Length (L)
LPT	30	32 mm	30 mm	173 mm
LPT	50	52 mm	50 mm	193 mm
LPT	100	102 mm	100 mm	243 mm
LPT	125	127 mm	125 mm	268 mm
LPT	150	152 mm	150 mm	293 mm
LPT	175	177 mm	175 mm	318 mm
LPT	200	202 mm	200 mm	343 mm
LPT	225	227 mm	225 mm	368 mm
LPT	250	252 mm	250 mm	393 mm
LPT	275	277 mm	275 mm	418 mm
LPT	300	302 mm	300 mm	443 mm
LPT	325	327 mm	325 mm	468 mm
LPT	350	352 mm	350 mm	493 mm
LPT	375	377 mm	375 mm	518 mm
LPT	400	402 mm	400 mm	543 mm
LPT	450	452 mm	450 mm	593 mm
LPT	500	502 mm	500 mm	643 mm
LPT	550	552 mm	550 mm	693 mm
LPT	600	602 mm	600 mm	743 mm
LPT	650	652 mm	650 mm	793 mm
LPT	700	702 mm	700 mm	843 mm
LPT	750	752 mm	750 mm	893 mm
LPT	800	802 mm	800 mm	943 mm

**Mechanical Dimensions**



**Optional Connection**

