

**Resistive Linear Position Transducer**



- Measuring range 50 mm - 500 mm
- Output 4-20 mA or 0-20 mA or 0-10 V
- Internal electronic circuit
- Stable output signal against supply voltage variations
- Best solution for automation systems

**Main Applications**

Plastic / Metal Injection Moulding Machineries, Textile Machineries, Transfer / Hydraulic Machineries, Marble / Stone Machineries and General Automation Applications

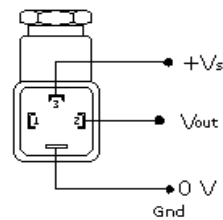
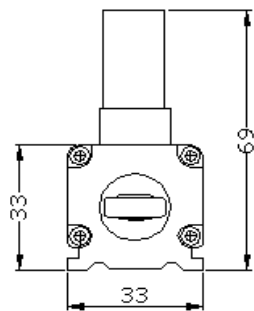
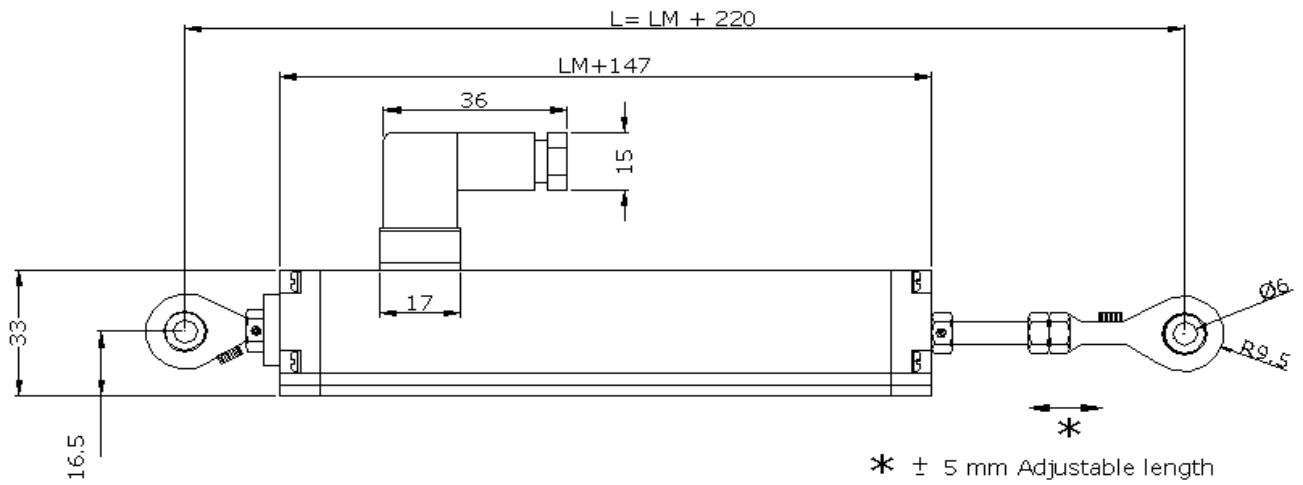
**Specifications**

Output	4-20 mA or 0-20 mA or 0-10 V
Linearity	± %0,5 ; ± %0,1 ; ± %0,05
Repeatability	≤ %0.01
Load resistance	≥ 10 Kohm
Supply voltage	12-30 VDC
Electrical connections	4 Pole, Hydraulic type
Mechanical stroke	50 to 500 mm
Mechanical life	100 * 10 <sup>6</sup> Cycles
Displacement speed	≤ 5 m/s
Rod diameter	6 mm
Rod material	Stainless steel
Case material	Anodized aluminium
Mechanical fixing	2 Ball joints
IP Degree	IP 54
Working temperature	- 20 / + 80 °C

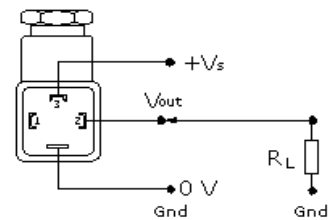
**Dimensions**

Model	LM	Mechanical Stroke (MS)	Electrical Measuring Stroke (EMS)	Total Length (L)
ELPM	50	52 mm	50 mm	270 mm
ELPM	100	102 mm	100 mm	320 mm
ELPM	125	127 mm	125 mm	345 mm
ELPM	150	152 mm	150 mm	370 mm
ELPM	175	177 mm	175 mm	395 mm
ELPM	200	202 mm	200 mm	420 mm
ELPM	225	227 mm	225 mm	445 mm
ELPM	250	252 mm	250 mm	470 mm
ELPM	275	277 mm	275 mm	495 mm
ELPM	300	302 mm	300 mm	520 mm
ELPM	325	327 mm	325 mm	545 mm
ELPM	350	352 mm	350 mm	570 mm
ELPM	375	377 mm	375 mm	595 mm
ELPM	400	402 mm	400 mm	620 mm
ELPM	450	452 mm	450 mm	670 mm
ELPM	500	502 mm	500 mm	720 mm

**Mechanical Dimensions**



Voltage output



Current output